



7 Falcon Green, Larkfield, Aylesford, ME20 6JN
Offers Over £310,000



A modern three bedroom house, located in the popular area of Larkfield. The property also benefits from being walking distance to the local primary schools. Situated back from the road and around a small green there is a private feel to the area.

The accommodation comprises entrance, bright and spacious living room and modern fitted open plan kitchen diner with access out the rear garden.

Upstairs this home offers three well proportioned bedrooms with built in wardrobes in the two main rooms, whilst the third bedroom is still a very good size and a modern family bathroom.

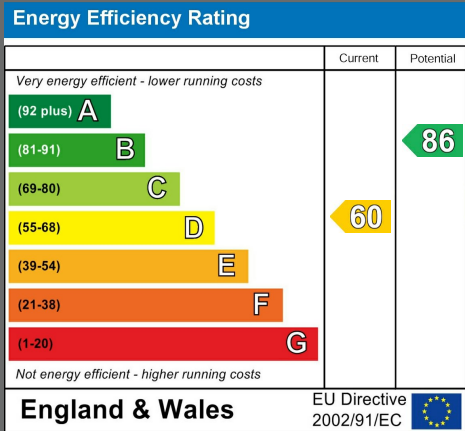
Externally there is a large garden to the front, rear garden that is partly decked and rear access that leads to the garage.

This property is ideal for a growing family.

Viewing is highly recommended.

EPC RATING D

- Spacious Terrace House
- 3 Good Sized Bedroom
- Modern Fitted Kitchen
- Excellent Location
- Good Sized Garden
- Near By To Local Schools
- Garage En Bloc
- Generous Sized Lounge





LOCAL AREA INFORMATION FOR LARKFIELD

Larkfield is a sought after area thanks to its convenient access to so many things.

For recreation you have the local leisure centre at Larkfield, many parks, green spaces and countryside close by. Leybourne Lakes and Manor Park are particularly noteworthy.

There are a good range of shops, supermarkets and eateries in Larkfield (including Martin's Square). West Malling is the closest town (less than 2 miles away) and is one of the most attractive small towns in mid-Kent with a wide main street lined on each side by a fine collection shops and eateries. Maidstone is approximately 5 miles away.

For the commuter Junction 4 of the M20 gives access to the motorway network. There are mainline train stations at nearby West Malling, Aylesford and East Malling.

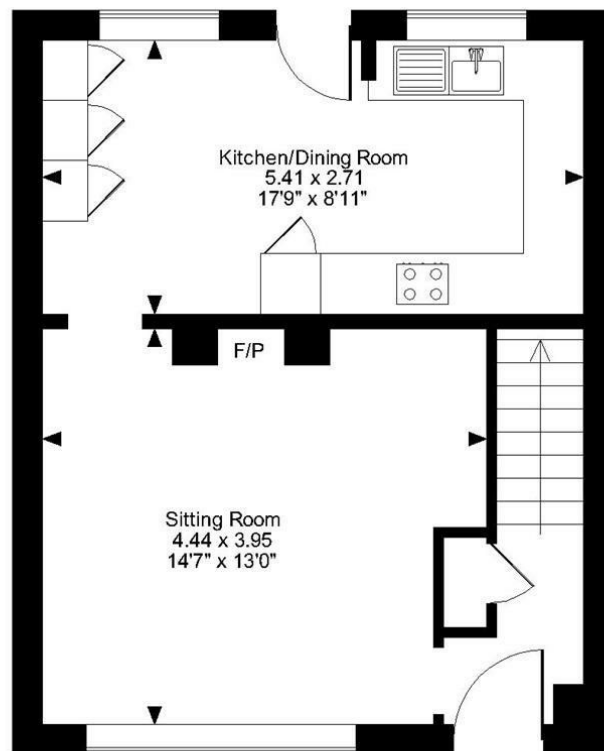
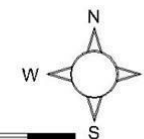
For education there is a comprehensive range of primary, grammar and private educational opportunities. For more schools information please visit www.kent-pages.co.uk/education or ask for a Page & Wells Key Facts for Buyers Guides.

ADDITIONAL INFORMATION

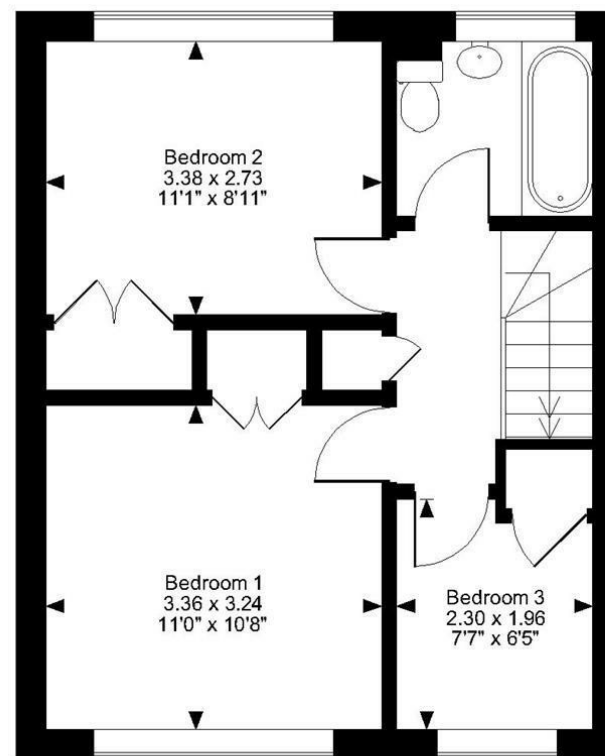
3 Bedroom House
Set Back Positioning
Garage En Block
Modern Kitchen/Diner
Council Tax Band C
EPC Rating D



Falcon Green, Larkfield, Aylesford
Approximate Gross Internal Area
793 Sq Ft/74 Sq M



Ground Floor



First Floor

FOR ILLUSTRATIVE PURPOSES ONLY - NOT TO SCALE

The position & size of doors, windows, appliances and other features are approximate only.

© ehouse. Unauthorised reproduction prohibited. Drawing ref. dig/8571386/SLU

Page & Wells limited for themselves and for the vendors of this property whose agents they are give notice that: 1. These particulars do not constitute any part of, an offer or a contract. 2. All statements contained in these particulars as to this property are made without responsibility on the part of Page & Wells Limited or the Vendor. 3. None of the statements contained in these particulars as to the property is to be relied on as statements or representations of fact. 4. Any intending purchaser must satisfy himself by inspection or otherwise as to the correctness of each of the statements contained in these particulars. 5. The vendor does not make or give, and neither Page & Wells Limited nor any person in their employment has any authority to make or give any representation whatsoever in relation to this property. These particulars are supplied on the understanding that all negotiations are carried out throughout Page & Wells Limited. Properties with a reference prefixes EAA are those which Page & Wells Limited disclose an interest in accordance with the provisions of the Estates Agents Act 1979

